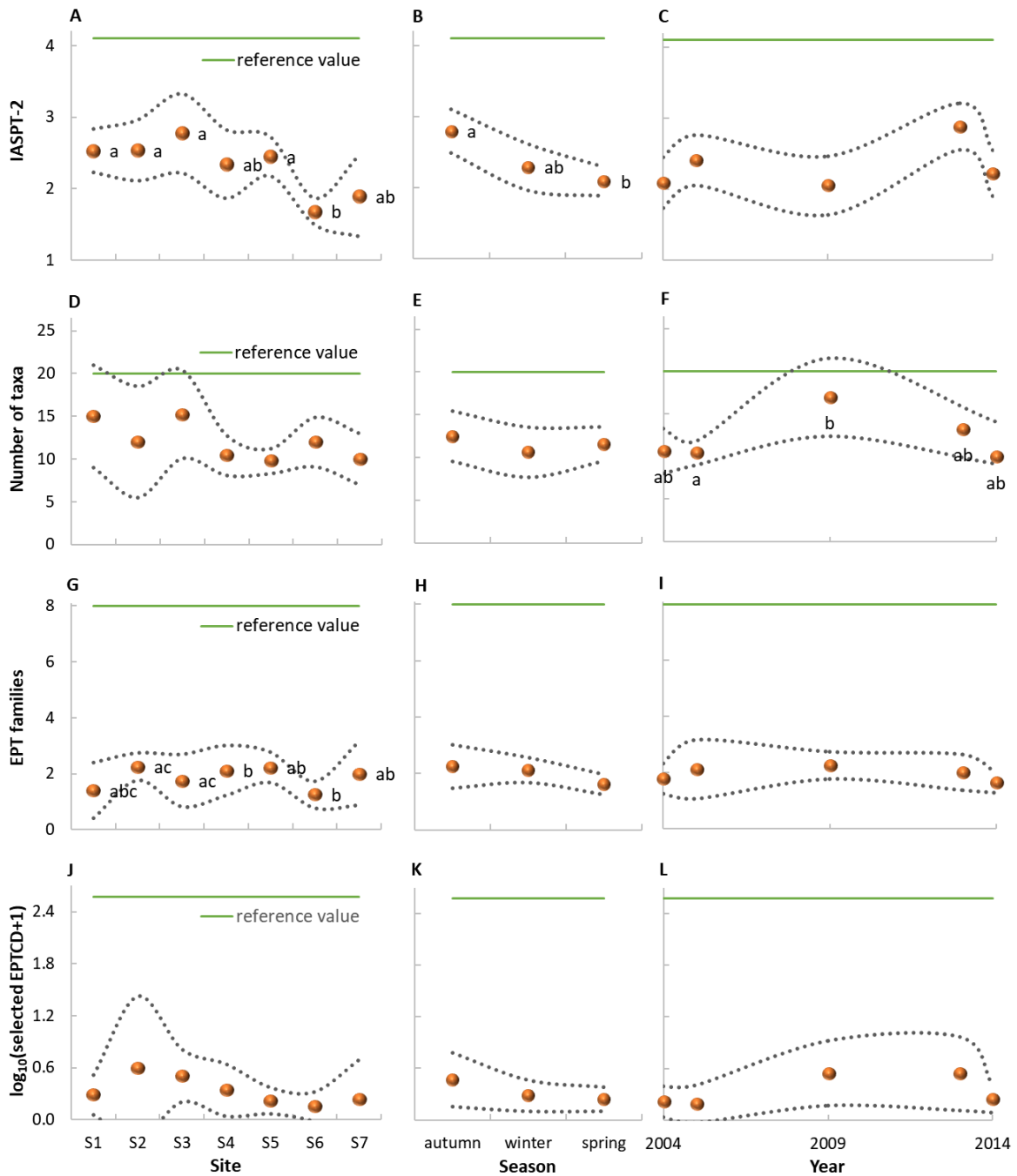


Abelho et al., 2024. Monitoring the biological quality of an urban stream using a learning by doing approach with higher education students. *Limnetica*, 43(2), 2024

### Supplementary material

**Table S1.** Date, meteorological season, and sampling (x) at each site of Ribeira de Covões during the study period. *Fecha, estación meteorológica y muestreo (x) en cada sitio de Ribeira de Covões durante el período de estudio.*

Year	Month	Meteorological season	Sites (upstream to downstream)						
			Site 1	Site 2	Site 3	Site 4	Site 5	Site 6	Site 7
2004	January	Winter	x			x	x		
	March	Spring	x			x	x	x	x
	November	Autumn	x			x	x	x	x
2005	March	Spring	x			x	x	x	x
2009	May	Spring	x			x	x	x	
2013	September	Autumn		x	x	x	x		
	November	Autumn		x	x	x	x		
2014	January	Winter		x	x	x	x		
	April	Spring		x	x	x	x		



**Figure S1** Metrics of the multi-metric index IPTIS: **A-C** total number of taxa, **D-F** number of EPT families, **G-I** Iberian average score per taxon (IASPT-2), and **J-L** abundance of the families Chloroperlidae, Nemouridae, Leuctridae, Leptophlebiidae, Ephemerellidae, Philopotamidae, Limnephilidae, Psychomyiidae, Sericostomatidae, Elmidae, Dryopidae, and Athericidae. Values are averages (dots) and 95% confidence intervals (dotted lines). **ADGJ** Longitudinal variation, **BEHK** Seasonal variation, **CFIL** Temporal variation. The horizontal full lines represent the reference values for running waters in littoral Central Portugal. Lower-case letters identify values with non-overlapping confidence intervals. *Métricas del índice multimétrico IPTIS: A-C número total de taxones, D-F número de familias EPT, G-I puntuación media ibérica por taxón (IASPT-2) y J-L abundancia de las familias Chloroperlidae, Nemouridae, Leuctridae, Leptophlebiidae, Ephemerellidae, Philopotamidae, Limnephilidae, Psychomyiidae, Sericostomatidae, Elmidae, Dryopidae y Athericidae. Los valores son promedios (puntos) e intervalos de confianza del 95 % (líneas de puntos). ADGJ Variación longitudinal, BEHK Variación estacional, CFIL Variación temporal. Las líneas completas horizontales representan los valores de referencia para las aguas corrientes en el litoral central de Portugal. Diferentes letras minúsculas identifican valores con intervalos de confianza que no se superponen*